

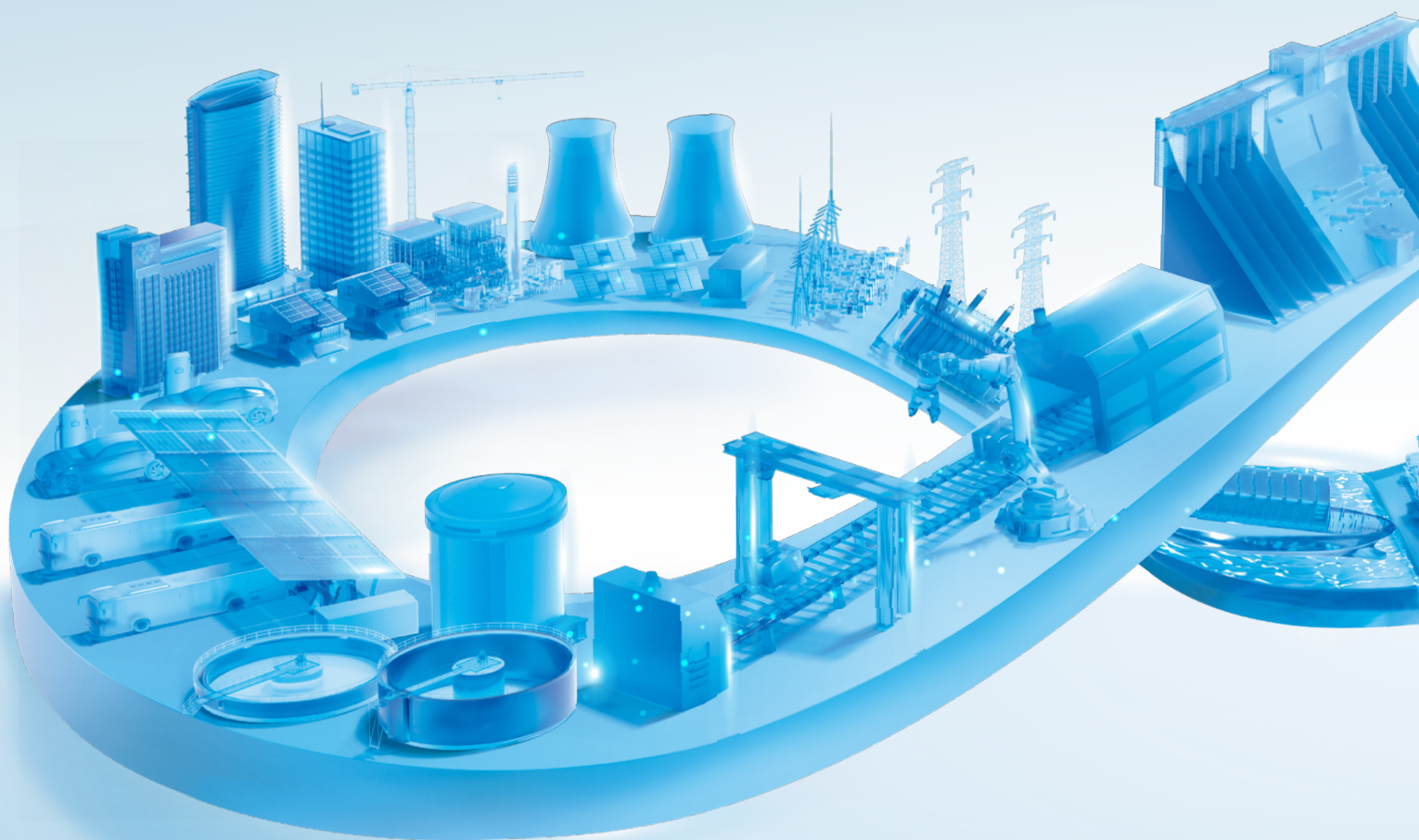
An aerial photograph of a large industrial facility, likely a manufacturing plant or warehouse. The roof is covered with a vast array of solar panels, organized in neat rows. The building has a blue and grey color scheme. In the background, there are parking lots filled with cars, some industrial equipment, and a green fence. The sky is clear and blue.

**CHNT**

Empower the World

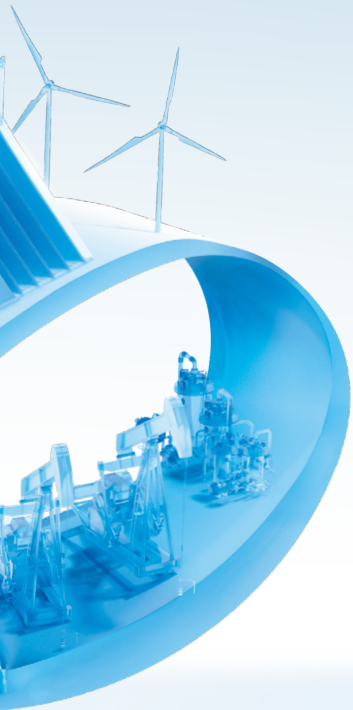
**CHINT Electric Solution for Solar Industry**






# CONTENTS

<b>1.0</b>	About CHINT	01
<b>2.0</b>	Our Portfolio - Star Products	05





## Our Solutions include

- |   |  |  |
|---|--|--|
|  Crystalline Silicon Manufacturing |  New Energy |  Power System & Energy Storage  |
|  Wires & Cables                   |  Power T&D |  Integrated Power Distribution |
|  Low-voltage Electrical          |  Meters   |  Building Electrical          |

Founded in 1984, CHINT Group Co., Ltd. (CHINT) is a global leading smart energy solutions provider. With more than 40 years of industry expertise, CHINT has remained committed to industrial innovation and brand excellence. Our company drives progress through five strategic pillars: industrialization, technological advancement, global expansion, digital transformation, and platform development.

CHINT operates across three core sectors—Green Energy, Intelligent Electrical Solutions, and Smart Low-Carbon Solutions—supported by two key platforms: CHINT Global and Sci-Tech Innovation Incubation. Its extensive business network spans more than 140 countries and regions, powered by a global workforce of over 50,000 employees.

In 2024, CHINT achieved USD 25 billion in revenue and has maintained its position among the Top 500 Chinese Enterprises for over 20 consecutive years. Notably, CHINT Electrics became China's first publicly listed company specializing in low-voltage electrical appliances, reinforcing its industry leadership.



USD **25** Billion  
Annual Revenue,  
CHINT Group



USD **27.7** Billion  
Total Assets,  
CHINT Group



**15%**  
YoY Revenue Annual Growth,  
CHINT Global



**140+**  
Business Coverage in  
Countries and Regions



**3%-12%**  
Annual R&D Investment  
Obtained from the  
Percentage of Sales



**10,000+**  
Accumulated Authorized  
Patents



**40+**  
Global Subsidiaries



**50,000+**  
Global Employees

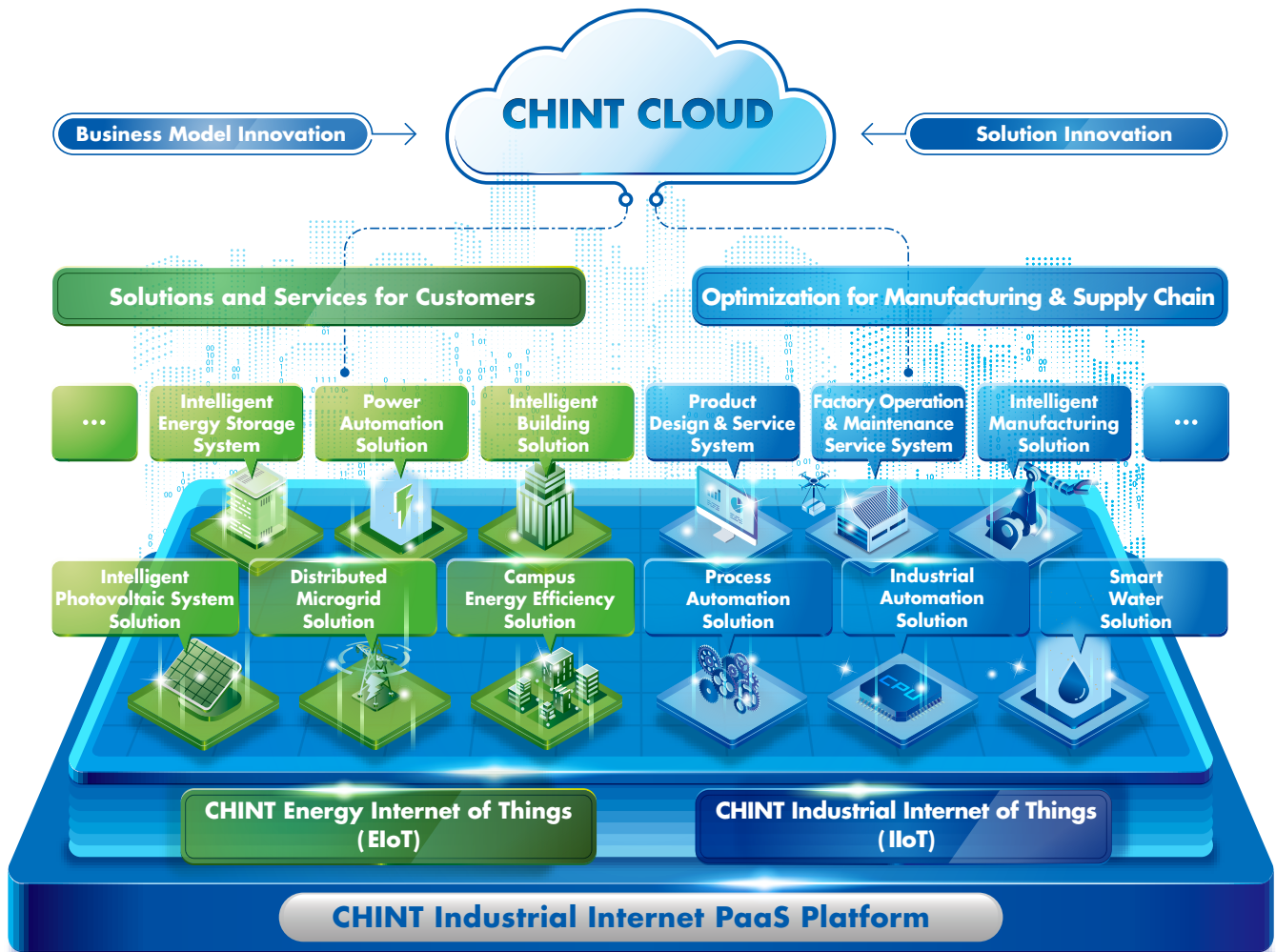


**68%+**  
Localization Rate of CHINT  
Global Employees





# ONE CLOUD & TWO NETS STRATEGY



Energy system optimization is an inevitable trend against the background of resource shortage, environmental pollution and climate change – three challenges faced by global energy development. To keep in line with the trend, CHINT actively implements the business strategy of One Cloud & Two Nets, continuously promotes the deep integration of big data, IoT, AI and manufacturing industry in stages to become a platform-based enterprise, and leads the new direction of industry development.

As a medium of smart technology and data applications, CHINT Cloud connects corporate in-house manufacturing with operation and management data, realizing digital applications and services both internally and externally.

As a user-centric multi-energy complementary smart energy system, CHINT EIoT provides a package of energy solutions for governments, industrial & commercial users and end users. Its business includes Smart Energy Efficiency, Smart Power, Smart Home and Smart Clean Energy, etc.

As a smart manufacturing system based on corporate digital transformation, CHINT IIoT constitutes a flexible, high-efficiency and intelligent industrial system. Its business includes Intelligent Manufacturing, Intelligent Industry, Smart Water, Smart Heating, etc.

# GLOBAL FOOTPRINT

Business Covering

140+

Countries and Regions



40+

Global Subsidiaries



30+

Global Manufacturing Bases



2,300+

Global Distributors



68%

Localization Rate of Global Employees



Sunlight

Singapore & Malaysia



Main Products: Low-voltage Switchgears

Sunlight

Vietnam



Main Products: MSB, MCC, SDB, DB, CU, Fire Pump Panel, Weatherproof Panel, String Combine Box, Solar Switchboard

SchneiTec CHINT

Cambodia



Main Products: MV Equipment including 22kV Distribution Transformer, Switchgear, Smart RMU, Capacitor Bank

Metering Factory

Uganda

Solar Factory

Thailand

Meter Factory

Mexico

Meter Factory

Kenya



Main Products: Meters



Main Products: PV Module, PV Cell

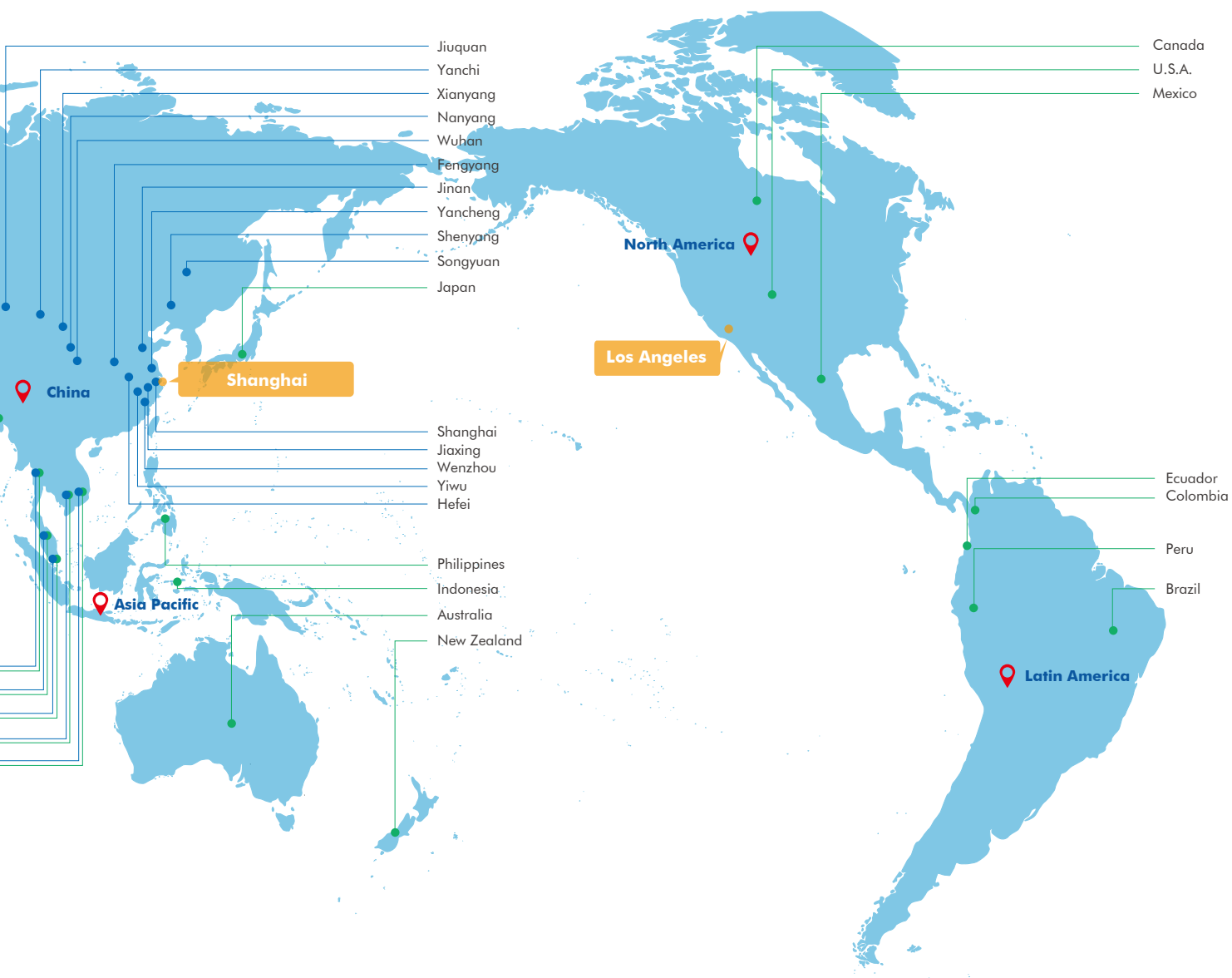


Main Products: Smart Meters



Main Products: Smart Meters





#### CHINT – EGEMAC

**Egypt**



Main Products: Full Series of Low-voltage Switchgears

#### CHINT ATC

**Saudi Arabia**



Main Products: RMU and Intelligent Power T&D Products of 33kV and below

#### CHINT-AJLAN & Bros

**Saudi Arabia**



Main Products: Low-voltage Components

#### Wenzhou Low-voltage Intelligent Factory

**China**



Main Products: Low-voltage Components

#### Power T&D Shanghai Factory

**China**



Main Products: Power Transformer, GIS, MV and LV Switchgear, HGIS, HV Circuit Breaker, Disconnecter

#### Power T&D Jiaxing Factory

**China**



Main Products: MV and LV Switchgear, C-GIS, MV Circuit Breaker, Prefabricated Substation

#### Haining Solar Intelligent Factory

**China**



Main Products: PV Module, PV Cell

## Our Portfolio - Star Products



### Natural Ester Oil-immersed Power Transformer

Natural ester oil-immersed power transformer is a full range of 750kV and below voltage power transformer designed and developed by CHINT in recent years, and has passed KEMA and other third-party type test certification, which can be used in photovoltaic booster power stations and power transmission and transformation supporting smart grids.

It has the characteristics of environmental protection, friendly, intelligent, low partial discharge, safety and reliability, and fully meets the requirements of users.

Leading the world in short-circuit testing.



**Feature:** The use of high-quality materials, noise reduction solutions, perfect technical.

**Advantage:** Low loss, low noise, low discharge, high short circuit withstand.

**Benefit:** Save operating costs, maintenance free.



**Feature:** Use natural ester or synthetic ester oil.

**Advantage:** Degradable and degradation rate of 99%, environmentally friendly. The ignition point is more than 340 degrees Celsius, about twice that of mineral oil.

**Benefit:** More environmentally friendly and safer.



2.0

## Our Portfolio - Star Products



### Oil-immersed up to 35kV



**Feature:** Iron core is made of high quality silicon steel.

**Advantage:** Provides good magnetic conductivity and low loss.

**Benefit:** By reducing energy loss, reduces power waste, also reduces long-term operating costs for users.



**Feature:** Mineral oil transformer.

**Advantage:** The technology is mature and the cost is economical.

**Benefit:** Provides a reliable option for projects with limited budgets while maintaining high performance standards.



**Feature:** Natural ester transformer.

**Advantage:** Good biodegradability, high flash point, excellent electrical performance.

**Benefit:** Enhanced safety and environmental performance, especially where fire protection requirements are stringent or environmental protection needs to be considered, providing a safer and more environmentally friendly option.



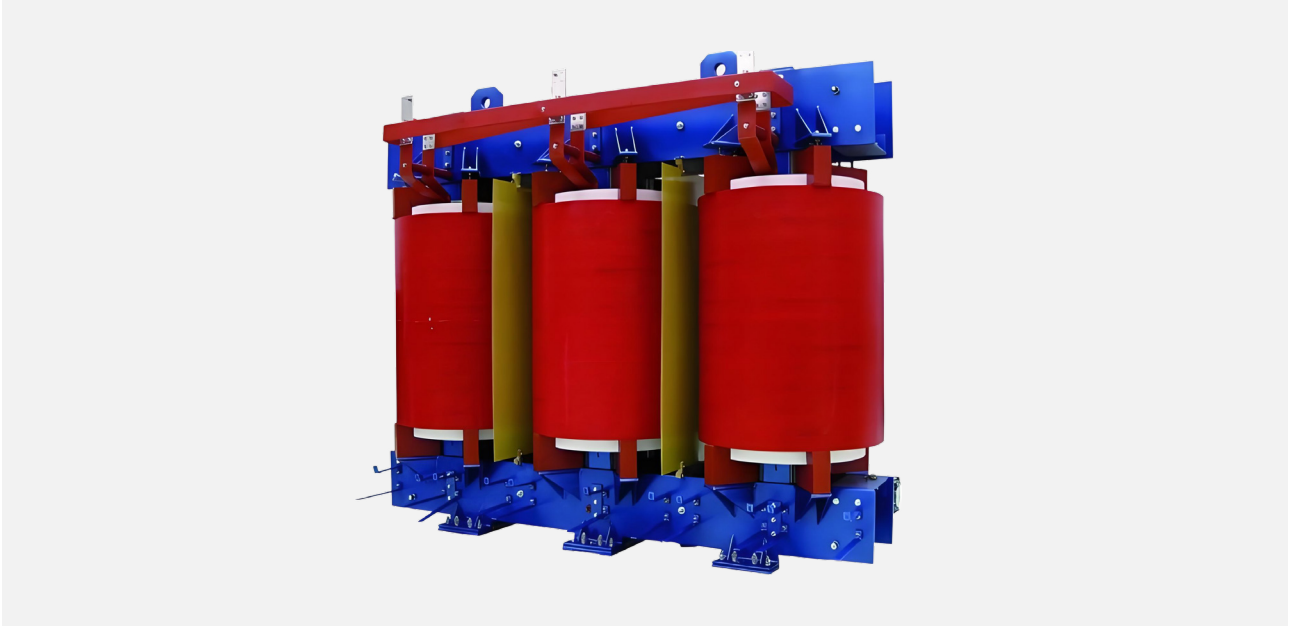
**Feature:** Fully enclosed corrugated tank structure design.

**Advantage:** Fully sealed structure, maintenance free, small size.

**Benefit:** Reduced maintenance costs, small footprint, suitable for application with limit space.

## 2.0

## Our Portfolio - Star Products



### Dry-type Power Transformer up to 35kV



**Feature:** High mechanical strength and strong short-circuit resistance.

**Advantage:** Ensures transformer stability and durability even under extreme conditions.

**Benefit:** To provide users with long-term reliable service, reduce the failure rate.



**Feature:** Low loss and low noise design.

**Advantage:** Improves energy efficiency while providing a quiet operating environment.

**Benefit:** Helps users reduce operating costs and improve working conditions, especially in noise-sensitive areas.



**Feature:** good heat dissipation performance and strong overload capability, the capacity can be increased when forced air cooling.

**Advantage:** Normal operation is guaranteed even under high temperature or load exceeding the rated value.

**Benefit:** Enhanced transformer adaptability and flexibility to provide additional power support in emergency situations to meet temporarily increased power demand.



**Feature:** Materials and technologies with excellent fire resistance.

**Advantage:** Significantly reduces the risk of fire.

**Benefit:** To provide users with higher safety standards, especially in environments with stringent fire protection requirements.



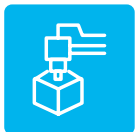
## Our Portfolio - Star Products



### SKID Solution

With the development of renewable energy and distribution networks, projects are often located in remote or harsh environments, with difficult & long-term on-site construction. The industry needs a standardized solution with high prefabrication and integration to solve these problems. Skid is suitable for rapid deployment, temporary power supply, and space-limited situations.

CHINT Skid Solution is an integrated solution which is designed and manufactured according to IEC 62271, combines switchgears, transformer, monitoring units, etc. All main components are CHINT brand. CHINT provides turn-key solution from pre-design to installation guidance.



**Feature:** Medium-voltage up to 40.5kV, low-voltage up to 1.14kV, and capacity up to 12.5MVA. Dual or triple-winding transformer and multiple structural models.

**Advantage:** Flexible customization.

**Benefit:** Cater to diverse needs.



**Feature:** Working temperature range -40°C to +55°C, enclosure corrosion resistance rated C5-M, protection level up to IP54.

**Advantage:** Protected from harsh environments.

**Benefit:** Adapt to extreme conditions.



**Feature:** Own brand main components pass third party type tests, with stable and reliable supply chain, ready for delivery 2-3 months after drawing approval.

**Advantage:** Excellent quality control, fast and stable delivery.

**Benefit:** Safe and reliable, fast and efficient.

## Our Portfolio - Star Products



### SF6 Free RMU

In the context of the global response to climate change and the accelerated push for “carbon neutrality,” the high environmental performance of electrical equipment has become a core industry issue. SF6 gas, widely used in traditional ring main units, is gradually being phased out by regulations in various regions due to its significant greenhouse effect.

CHINT, in line with international trends, has launched eco-friendly ring main units. These RMUs use dry air as the insulating gas and feature optimized electric field design. While ensuring insulation performance and safety, meeting the demand for the green upgrade of global power grids, implementing ESG responsibilities.



**Feature:** Dry air insulated switchgear with ultra-low global warming potential (GWP < 1).

**Advantage:** Innovative eco-friendly design actively reduces carbon footprint.

**Benefit:** Meets global environmental policy requirements and supports sustainable energy goals.



**Feature:** Rated relative pressure of 0.05MPa, can work normally even at ZERO gauge pressure.

**Advantage:** Utilizes proven gas tank welding technology for exceptional sealing and reliability.

**Benefit:** Minimizes gas leakage risks and guarantees continuous, stable power supply, reducing downtime risks.



**Feature:** Equipped with comprehensive mechanical interlocking.

**Advantage:** Ensures standardized workflows and prevents accidental operation.

**Benefit:** Ensures safety and reliability for operators and systems.



**Feature:** Fully sealed and insulated structure with high endurance switching components.

**Advantage:** Maintenance free within a 30-year design life.

**Benefit:** Reduces maintenance time and costs, maximizes long-term operational efficiency.



## Our Portfolio - Star Products



### NGC5 (Low Voltage Switchgear)

- Certificates: TUV/CE
- Rating current up to 6300A
- Icw up to 100kA/1s
- Up to IP43
- 50/60Hz



**Feature:** Special ventilation channel design.

**Advantage:** Achieve excellent natural ventilation system.

**Benefit:** Reduce temperature rise and ensure safety.



**Feature:** Modular design of drawer units.

**Advantage:** Rapid maintenance and expansion.

**Benefit:** Reduce maintenance and upgrade cost.



**Feature:** Flexibly matched with intelligent components.

**Advantage:** Achieve remote operation and maintenance.

**Benefit:** Intelligent operation and maintenance, improve power safety, reduce customer operation and maintenance costs.

2.0

## Our Portfolio - Main Products

### Power Transformer



**Rated Power:** Up to 1000MVA

**Rated voltage:** Up to 1000kV

**Standard:** IEC, IEEE, AS, BS, etc.

**Wide Application:** Export to more than 120 countries and regions

- High security and reliability in operation
- Economic and efficient to reduce network loss and operation cost
- Compact design, Low noise and light in weight
- Competitive short delivery time

### Shunt Reactor



**Rated Power:** Up to 250MVA

**Rated voltage:** Up to 750kV

**Standard:** IEC, IEEE, AS, BS, etc.

**Wide Application:** Export to more than 120 countries and regions

### Variable Shunt Reactor



**Rated Power:** Up to 250MVA

**Rated voltage:** Up to 750kV

**Standard:** IEC, IEEE, AS, BS, etc.

**Wide Application:** Export to more than 120 countries and regions

### Mobile Substation



**Rated Power:** Up to 120MVA

**Rated voltage:** Up to 245kV

**Standard:** IEC, IEEE, AS, BS, etc.

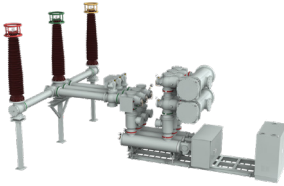
**Wide Application:** Export to Italy, Brazil, Honduras etc.



2.0

## Our Portfolio - Main Products

### HV Switchgear-GIS



**Hybrid Compact Switchgear(HGIS):** Up to 252kV

**Gas Insulated Switchgears(GIS):** Up to 550kV

- Reliable disconnecter
- Perfect tightness
- Reliability insulator
- High adaptability

### HV Switchgear-AIS



**HV CB, DS, ES:** Up to 252kV

- SF6 Circuit Breaker (Live & Dead tank)
- Disconnector (Horizontal & Vertical)
- Earthing Switch

### MV Switchgear



**MV Switchgear up to 40.5kV**

- C-GIS: 12kV, 24, 40.5kV
- RMU: 12kV, 17.5, 24, 40.5kV
- AIS: 12kV, 17.5, 24, 40.5kV

### Ex9ASD DC Series Air Switch Disconnecter



**Frame current:** 2500A, 4000A

**Rated voltage:** DC750V(3P), DC1000V(4P), DC1500V(4P)

**More Safety:** Insulation voltage up to 1600V

**Wide Application:** Utilization Category includes DC-22A, DC-23A, DC-PV2

**Long Electrical Durability:** DC750V: ≥ 5000 times, DC1500V: ≥ 3000 times



2.0

## Our Portfolio - Main Products

### Ex9A-HU Air Circuit Breaker



**Frame current:** 2500A, 4000A

**Rated voltage:** AC 800V, 1000V, 1150V

**Number of Poles:** 3P, 4P

**High short circuit capabilities:** Ultimate, service and withstandable short circuit currents up to 75kA in 800VAC IT networks

**High Reliability:** The highly reliable Ex9A is tested and verified under extreme conditions

**Powerful Functions:** The smart controller support LSIG protection, detailed measurements and monitoring of the grid and other advanced features and other advanced functions.



### Ex9I(Z) HV Series Switch Disconnecter



**Frame size:** AC Ex9I-HV: 250A, 630A; DC Ex9IZ HV: 320A, 630A

**AC Ex9I-HV:** 250A, 630A; DC Ex9IZ HV: 320A, 630A

**Rated voltage:** Ex9I-HV: AC380/690V, AC800V, AC1000/1140V; Ex9IZ-HV: DC1000V, DC1500V

**Number of Poles:** 2P, 4P, 6P

**Higher Voltage:** The maximum voltage can reach 1500VDC, 1140VAC. It reduces the power losses of photovoltaic system

**Trustable stability:** Rated short-time withstand current is up to 10kA/1s for 630A

**Wide Application:** Suitable to be applied in scenarios where reverse current and overload may occur



### Ex9MD HV Series Moulded Case Circuit Breaker



**Frame current:** 630A

**Rated voltage:** DC1500V

**Number of Poles:** 2P

**Compact Size:** The product width is only 98mm, effectively save the space of combiner box

**Safe and reliable:** The short-circuit breaking capacity can reach up to 15kA, reliably cut off the short-circuit fault current under DC with zero arc flash



2.0

## Our Portfolio - Main Products

### Ex9M HV AC Series



**Frame current:** 250A, 630A

**Rated voltage:** 690/800/1000/1150V AC

**Number of Poles:** 3P

**Dedicated design:** The maximum working voltage can reach up to AC 1150V and insulation voltage is up to AC1250V

**High Breaking Capacity:** The ultimate short-circuit breaking capacity is rated at 50kA@AC690V and 50kA@800V, cover the most of protection requirement in PV system



### Ex9BP Series DC Miniature Circuit Breaker



**Rated current:** 10~63A

**Rated voltage:** DC 1000V

**Number of Poles:** 2P, 4P

**Dedicated design:** Thanks to its polarity independency design, Ex9BP are suitable for photovoltaic and energy storage applications up to DC1000V with non polarity feature

**Flexible Accessories:** It can be combined with wide range of accessories including auxiliary and signal contacts, shunt trip release and undervoltage release



### Ex9FP30H Series DC Fuse



**Rated current:** 2~30A

**Rated voltage:** DC 1500V

**Number of Poles:** 1P

**Higher Voltage:** Rated voltage 1500 VDC suitable for protection of solar system with higher voltage

**High Breaking Capacity:** Rated short-circuit breaking capacity  $I_{cn}$  is up to 20 kA, capable to protect against short circuit of PV strings

**More convenient:** Modular product design, guide rail installation, easy to replace the fuse-link





2.0

## Our Portfolio - Main Products

### Ex9UEP Series DC SPD



- Max continuous operational voltage UCPV from 500 to 1500 V DC
- Nominal discharge current  $I_n$  20 kA (8/20  $\mu$ s) per path
- Maximum discharge current  $I_{max}$  40 kA (8/20  $\mu$ s)
- Impulse discharge current  $I_{imp}$  6.25 kA (10/350  $\mu$ s)

**Wide application:** De-signed and tested according PV I+II and II class from EN 61643-31 standard

**User friendly:** Indication front window helps users to know the status of device and remote-signal port is able to provide remote indication and alarm. Plug-in module design make it convenient to change module without device disconnection

### Ex9IR Series Switch Disconnecter



**Rated voltage:** DC1500V

**Rated current:** 13A-125A

**Utilization Category:** DC-PV1, DC-PV2

**Outstanding performance:** The double Breaking Technique improves the making and breaking capacity of the product and makes the isolation more reliable in the DC high-voltage application environment

**Modular Design:** Increasing or decreasing the load circuit is optional, saving installation space

### Ex9C Series Contactor



**Rated voltage:** 1000V (max)

**Rated current:** 06A -1450A

**Frequency:** 50/60Hz

**Wide application:** The rated working voltage is up to 1000V, and the rated working current is up to 1450A under the AC-1/1000V utilization category

**Excellent reliability:** The dust-proof design greatly improves the reliability of the contacts

**Easy wiring:** The coil can be wired at either the top side or the bottom side

**Strong extensibility:** The built-in auxiliary contacts that can be 2NO+2NC, meeting the design requirements of various circuits

### Smart Meter DDSU666-G/DTSU666-G Series



**Rated voltage:** 230V, 400V

**Interface:** RS485

**Protocol:** Modbus-RTU

**Baud rate:** 1200/2400/4800/9600/19200/115200 bps

**Special for PV and BESS:** Bi-directional measurement for kW and kWh

**Multi-measurement:** kWh, W, V, A, PF, Hz, etc

**Fast responding for 0-injection:** Active power refresh rate is about 50ms

## Asia Pacific

### China | Global HQ

ZHEJIANG CHINT ELECTRICS CO., LTD.

Add: A3 Building, No. 3655 Sixian Road, Songjiang Shanghai 201614.  
Tel: +86 21 5677 7777  
Fax: +86 21 5677 7777  
E-mail: global-sales@chintglobal.com  
Web: www.chintglobal.com

### Vietnam

CHINT Vietnam Holding Co., Ltd

Add: So 2Bis-4-6, Le Thanh Ton, P. Ben Nghe Quan 1, Ho Chi Minh, Vietnam.  
Tel: +84 0283 8270 015  
E-mail: marketing.vn@chintglobal.com  
Web: www.chintglobal.vn

Sunlight Electrical (VN) Co., Ltd

Add: 20 Doc Lap Ave, VSIP, Thuan An City, Binh Duong Province, Vietnam.  
Tel: +84 0274 3743 505  
E-mail: sales.sev@sunlightgroup-vn.com.vn  
Web: www.sunlightvietnam.com.vn

### Korea

CHINT Electric Korea Co.,LTD

Add: B501, 40, Imiro, Uiwang-Si, Gyeonggi-Do, KOREA 16006.  
Tel: +82 31 8068 7099  
E-mail: lrning@chint.com  
Web: https://www.chintglobal.kr

### India

CHINT India Energy Solution Private Limited

Add: Discovery Tower, Plot No. A-17, Ground Floor Industrial Area Sector 62 Noida, India 201309.  
Tel: +91 1202 9750 57  
E-mail: marketing@chint.co.in  
Web: www.chint.co.in

### Malaysia

Alpha Automation (Selangor) Sdn. Bhd.

Add: No. 11, Temasya 18, Jalan Pelukis U1/46B, Seksyen U1, 40150 Shah Alam, Selangor.  
Tel: +603-5569 7787  
Fax: +603-5569 9295  
Email: chintmalaysia@alphasel.com  
Web: www.alphasel.com

## West Asia & Africa

### Egypt

CHINT Electrics (Egypt) Co., Ltd

Add: Building (B123-C11) Smart Village, Abu Rawash, Giza - Egypt  
Tel: (+20) 235 373 725/(+20) 235 373 735  
P.O BOX : 00202  
E-mail: chinteg@chintglobal.com

CHINT EGEMAC for Electrical Products co. Ltd

Add: Area No.4B inside area No.6 Developers Industrial Zone, Eloula industrial compound, 6th of October, Giza, Egypt.  
E-mail: ahmed.bayoumi@chint-egemac.com  
Tel: (+2) 01064108151/01202348586  
Fax: (+2)38642389  
Web: www.CHINT-EGEMAC.com

### Saudi Arabia

CHINT AJLAN AND BROTHERS ELECTRICAL CO., LTD

Add: East Ring Rd Ext, New Industry Area, Riyadh 14338 KSA  
E-mail: chint-ajlanbros@chint.com  
Web: www.chint-ajlanbros.com

CHINT ARABIAN ELECTRICAL INDUSTRIAL CO., LTD.

Building NO 7183, 3RD Industrial City, Damman Kingdom of Saudi Arabian  
Tel: 966557951923  
E-mail: Belal.Abdel@chintglobal.com  
Web: www.chint-atc.com

## Singapore | Asia Pacific HQ

CHINT GLOBAL INTERNATIONAL PTE LTD

Add: 8 Kallang Avenue, #04-06/09 Aperia Office Tower 1, Singapore 339509.  
Tel: +65 6329 3110  
Fax: +65 6329 3159  
E-mail: sales.apac@chint.com  
Website: www.ChintGlobal.com

SUNLIGHT ELECTRICAL PTE LTD

Add: 1 Third Chin Bee Road, Singapore 618679.  
Tel: +65 6741 9055  
Fax : +65 6265 4586  
E-mail: sales@sunlightgroup.com  
Web: www.sunlightgroup.com

## Cambodia

CHINT (Cambodia) Power Equipment Co., Ltd

Add: No.15, St. 542, Sangkat Boeung Kok 1, Khan Toul Kork, Phnom Penh, Cambodia.  
Tel: +855 23 231 077  
E-mail: lbin3@chintglobal.com  
Web: www.chintglobal.com

SchneiTec CHINT Co., Ltd

Add: Ansor Kdam Village, Sna Ansa Commune, Krakor District, Pursat Province, Cambodia  
Tel: +855 09 5353 268  
E-mail: liubin@schneitec-chint.com.kh / info@schneitec-chint.com.kh  
Web: www.schneitec-chint.com.kh

## Indonesia

PT. CHINT Indonesia

Add: Kompleks Prima Center I, Blok C9-10, Jl. Pesing Poglar Jl. Pool PPD No. 11, RT.9/RW.2, Cengkareng, Jakarta Barat.  
Tel: +62 21 5436 3000  
E-mail: sales@chint-indonesia.com  
Web: www.chint-Indonesia.com

## Philippines

CHINT ELECTRIC CO., LTD

Add: Unit 201, Taipan Place, F. Ortigas Jr. Road, Ortigas Center, Pasig City, Metro Manila, Philippines  
Tel: +63 (2) 83653068  
E-mail: liq07@chintglobal.com / chintph@chintglobal.com  
Web: www.chintglobal.com

## U.A.E

CHINT MIDDLE EAST AND AFRICA DMCC

Add: Unit No. 2101, Jumeirah Business Center 1, Jumeirah Lakes Towers, Dubai, UAE  
Tel: +97145571532  
P.O BOX: 337555  
E-mail: global-sales@chintglobal.com  
Web: https://chintglobal.com

## Uganda

CHINT METERS&ELECTRICAL UGANDA CO. LTD

Add: PLOT 378,TIRINYI ROAD, TANGSHAN MBALE INDUSTRIAL PARK, MBALE,UGANDA  
Tel: +256 741242096  
E-mail: chintuganda@chint.com

## Nigeria

CHINT POWER&ENERGY SERVICES LIMITED

Add: 3rd Floor, Churchgate Tower 2, PC 31 Churchgate Street, Victoria Island, Lagos Nigeria  
Tel: +234 8108637866  
E-mail: nigeria@chintglobal.com

## Kenya

ZHENGTAI ELECTRICS(KENYA) CO., LIMITED

Add: OFFICE 1A, 8TH FLOOR, KISM TOWERS, LR No. 209/945/1- NGONG ROAD - NAIROBI, KENYA  
Tel: +254 713 871 243  
E-mail: chintkenya@chintglobal.com

CHINT GLOBAL PTE. LTD.

Herikerbergweg 74 1101 CM Amsterdam  
The Netherlands

Phone: 86-400-1177797 Web: [www.chintglobal.com](http://www.chintglobal.com)

E-mail: [global-sales@chint.com](mailto:global-sales@chint.com)



Printed by CHINT GROUP. No part of this brochure may be used or reproduced in any manner whatsoever without written permission. CHINT is the only publisher that can modify or change the content. Parts of the pictures used in the brochure are from the Internet. Please contact us in any case of copyright.



© CHINT GROUP ALL RIGHTS Reserved Recycle Paper Printed  
2025.04